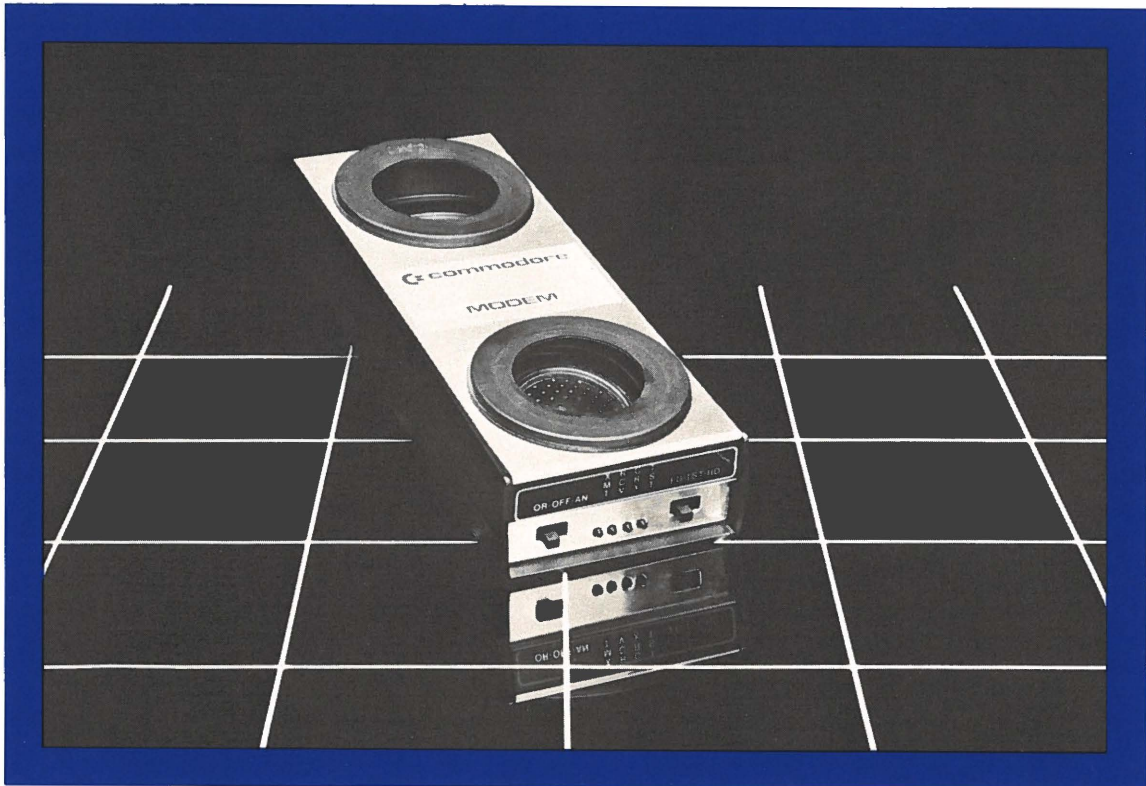


MODEM™



COMMODORE BUSINESS SYSTEMS.
Now that's smart thinking.

 **commodore**

MODEM™

Commodore offers a small, lightweight, high-performance modem that features accurate teleprocessing that even meets the requirements of CCITT countries. Exceptional performance — even on noisy telephone lines — is assured by Commodore's filter circuitry, carrier detection, and exclusive acoustic chambers.

A switchable four-section bandpass filter provides excellent out-of-band rejection. This assures accurate processing of the received carrier, even at signal levels of less than -47 dBm. The proven soft limiter and phase lock loop discriminator provide data that is essentially jitter-free.

To assure compatibility with all other 103 type modems, the CBM Modem oscillator is built using highly stable, state-variable circuitry. This circuitry delivers a nearly harmonic-free, phase-coherent sine wave to the telephone network. Because of the pureness of the sine wave, the Commodore Modem exceeds even the stringent harmonic requirements of all CCITT countries.

The carrier detect circuitry prevents the modem from attempting to operate when excessive noise would produce errors or cause marginal operation. This carrier detect circuitry assures accurate teleprocessing connections and prevents chatter when the received signal fades.

The CBM Modem also features exclusive triple-sealed flat-mounted cups which lock the handset into the acoustic chamber. This produces superior acoustic isolation and mechanical cushioning. The modem was designed to adapt to the most common handsets used throughout the world and offers the utmost in flexibility and transmission reliability.

SPECIFICATIONS

Operating Modes: Full or half duplex
Operating Speed: Normally fixed at 300 BPS
Interface: Standard IEEE 488
Compatibility: Bell 103 and 113; CCITT
Modulation: Frequency shifted key (FSK)
Transmit Frequencies: *Originate-1070 Hz/Space, 1270 Hz/Mark; Answer-2025 Hz/Space, 2225 Hz/Mark
Receive Frequencies: *Originate-2025 Hz/Space, 2225 Hz/Mark; Answer 1070 Hz/Space, 1270 Hz/Mark
Transmit Level: -15 dBm
Receiver Sensitivity: -50 dBm ON, -53 dBm OFF

Carrier Detect Delay: 1.2 seconds ON; 120 msec OFF
Frequency Stability: ± 0.3 percent
Switches: Originate/Off/Answer; Full Duplex/Test/Half Duplex
Indicators: Transmit Data, Receive Data, Carrier Ready, Test

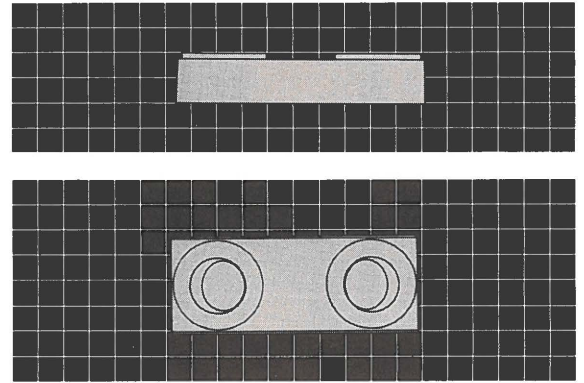
ENVIRONMENTAL REQUIREMENTS

Operating room temperature of 5°C to 50°C . Relative humidity 10 to 90 percent (noncondensing).

POWER

Supplied by 24 VAC/150 mA UL/CSA listed wallmount transformer. Input 115 VAC, 2.5 watts.

* International CCITT frequencies available.



Scale: 1"

PHYSICAL SIZE

Height: 2" (5 cm)
Length: 11" (27.9 cm)
Width: 4" (10.1 cm)
Weight: 2 lbs (.90 kg)
Shipping Weight: 2.5 lbs (1.14 kg)



Commodore Business Machines, 3370 Pharmacy Avenue,
Agincourt, Ontario M1W 2K4 (416) 499-4292.

Call toll free 1-800-268-3105.
In B.C. call 112-800-268-3105.

Commodore Business Machines, 950 Rittenhouse Road,
Norristown, PA 19401 (215) 666-7950.

Any and all specifications subject to change without notice

PRINTED IN CANADA