

instructions

FOR THE



4K CHIP SET

MODEL H8-3

INTRODUCTION

This 4K Chip Set accessory increases the memory capacity of your 4K memory board to 8K.

PARTS LIST

Check each part against the following list.

KEY No.	HEATH Part No.	QTY.	DESCRIPTION	CIRCUIT Comp. No.
---------	----------------	------	-------------	-------------------

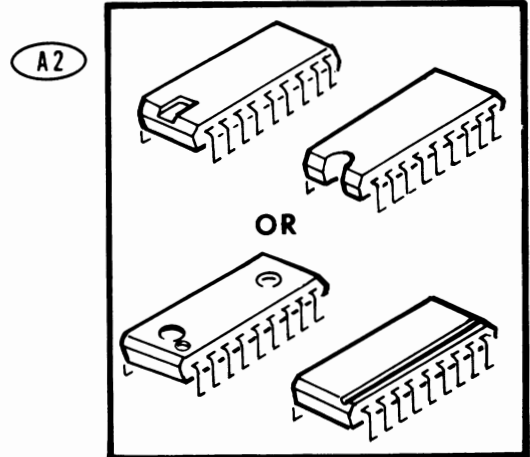
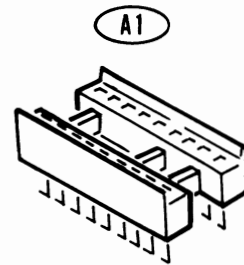
IMPORTANT

If any components are missing from the sealed IC package, return the **unopened** package for replacement. Claims for missing IC's will not be honored.

If you locate damaged or defective IC's, order individual replacements. Be sure to follow the standard instructions on the "Parts Order Form" and on the inside rear cover of the Manual. Save defective or damaged components for return instructions.

A1	434-310	8	18-pin IC socket	
A2	443-832	8	4044 IC	IC106, IC107, IC108, IC109, IC110, IC111, IC112, IC113
	391-34	1	Blue and white label	
		1	Instruction sheet	

Solder



Copyright © 1977
Heath Company
All Rights Reserved
Printed in the United States of America

HEATH COMPANY
BENTON HARBOR, MICHIGAN 49022

597-1651

STEP-BY-STEP ASSEMBLY

START

() Remove the top cover, the tie bracket, and the memory circuit board from your Computer, if this has not already been done.

() Position your memory circuit board as shown. Then complete the following steps.

NOTE: The IC sockets that you will install in the following steps can be installed either way in the circuit board. Be sure the pins are straight, insert the pins into the circuit board holes, and solder the pins to the foil as you install each socket.

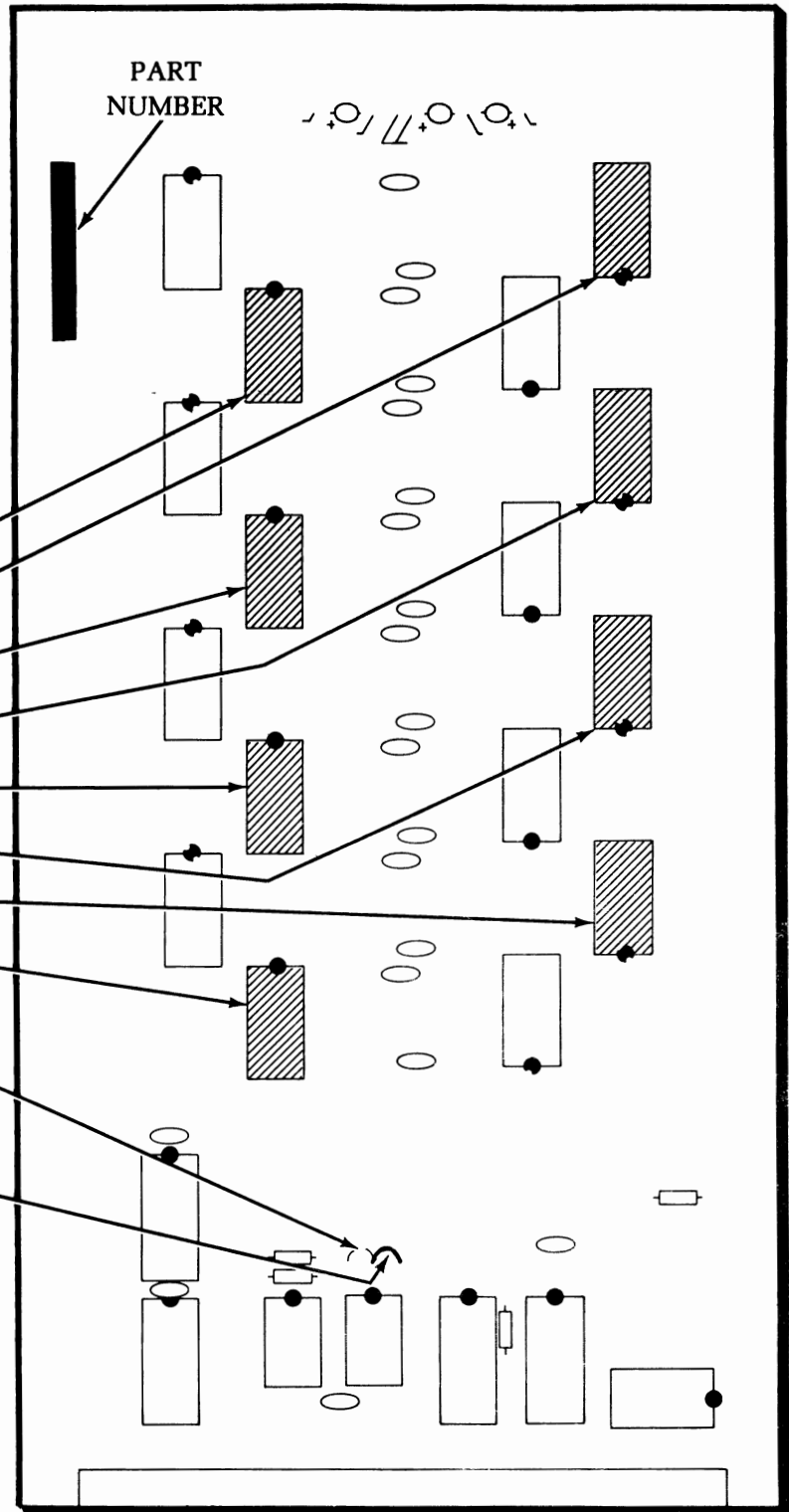
Install 18-pin IC sockets at:

- () IC113.....
- () IC106.....
- () IC112.....
- () IC107.....
- () IC111.....
- () IC108.....
- () IC109.....
- () IC110.....

() If your circuit board has a jumper wire installed at 4K, unsolder and remove it.

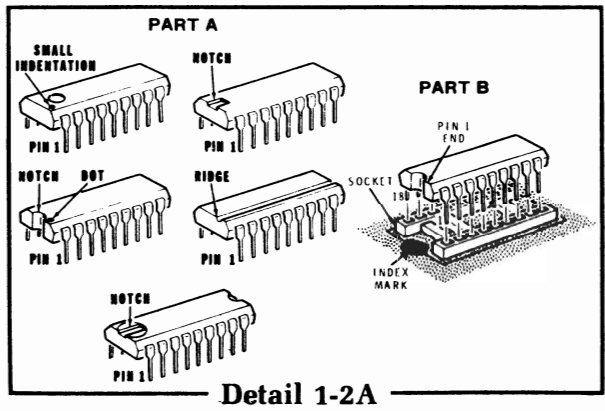
() Install a bare jumper wire at 8K. Use a cutoff component lead or similar bare wire. Solder the wire to the foil and cutoff any excess lead lengths.

NOTE: If you were referred to this kit by your 4K Static Memory Manual, return to "Circuit Board Checks" in that Manual. If you are adding this accessory at a later date, proceed to "Integrated Circuit Installation."



PICTORIAL 1-1

INTEGRATED CIRCUIT INSTALLATION

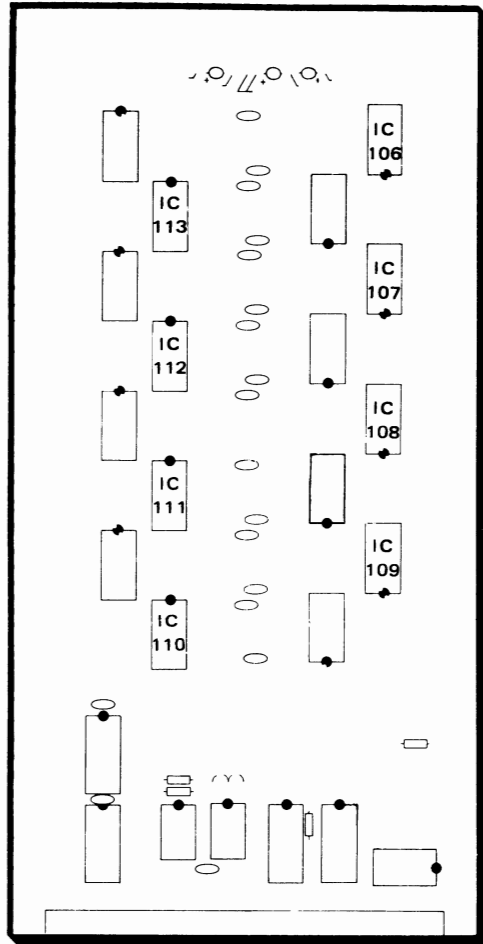


START →

NOTES:

1. Refer to Detail 1-2A and, as you install each IC in the following steps, position its pin 1 end (shown in Part A of the Detail) toward the index mark on the circuit board.
2. The integrated circuits in this kit are rugged and reliable components. However, they can be damaged by static electricity if it is discharged from your body through an integrated circuit pin to another object. Read the entire next step first. Then carefully perform the step without interruption.

- () IC106: Install a 4044 IC (#443-832) at IC106 as follows:
1. Remove the IC from the conductive foam.
 2. Hold the IC in one hand and straighten any bent pins with the other hand.
 3. Continue holding the IC, being careful not to touch it to anything; then touch the circuit board with your other hand.
 4. Install the IC in its socket.



PICTORIAL 1-2

CONTINUE →

Use the same procedure to install seven 4044 IC's (#443-832) at the following locations:

- () IC107.
- () IC108.
- () IC109.
- () IC113. **Note the changed position of the index mark.**
- () IC112.
- () IC111.
- () IC110.
- () Check all of the IC's just installed for the proper installation. **NOTE:** If any of the IC's is incorrectly installed, damage to all of the IC's will result.

NOTE: The blue and white label shows the Model Number and Production Series Number of your kit. Refer to these numbers in any communications with the Heath Company about this kit. This assures you that you will receive the most complete and up-to-date information in return.

- () Carefully peel the backing paper from the blue and white label. Then press the label onto the lower left corner of the rear panel of your H8 Computer. Do not cover up any other labels that may be present.

- () Reinstall the memory circuit board in your Computer. Then replace the tie bracket and top cover.

FINISH